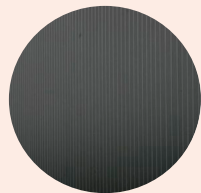
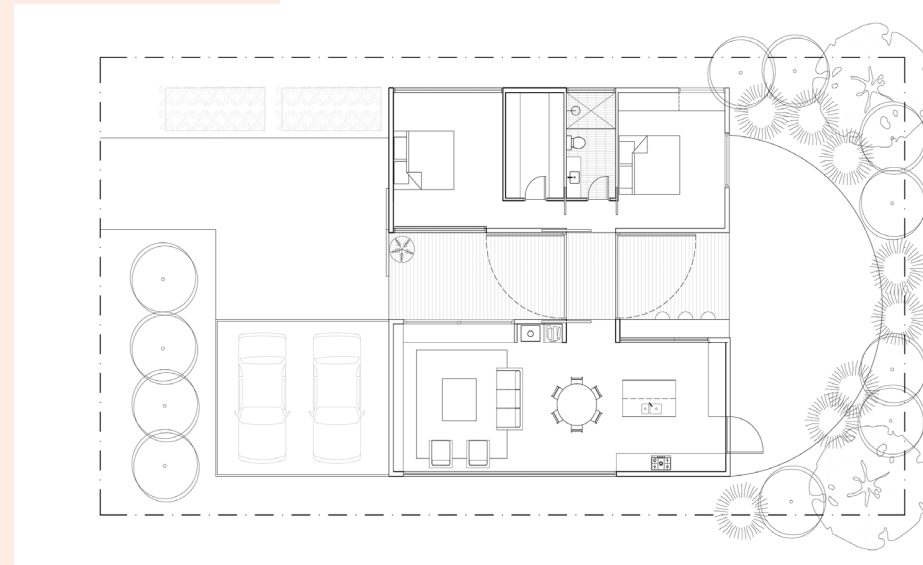


GREENHOUSE

by  The Sociable Weaver

BEDROOMS	BATHROOMS	DWELLING SIZE	GARAGE SIZE	ENERGY RATING
2	1	137m ²	36m ²	7.5 - 8.5 stars



The Greenhouse invites connection to others, to ourselves and to nature. With two connected pavilions, one for living and one for sleeping, the Greenhouse separates the different aspects of our lives – private and social.

Both pavilions can be opened up to the central breezeway, letting fresh air and sunlight flow into the rooms, inviting nature to wash over the home.

SUSTAINABLE MATERIALS:

FSC certified timber frame; Colorbond roof; option for recycled brickwork or rammed earth walls for thermal mass; naturally burnished cement floor for thermal mass; no VOC paint throughout; 'Green Switch' to cut power to all lights and power points, excluding fridge and hot water system, to reduce energy consumption and electromagnetic radiation at night; LED lighting; EZero low VOC joinery throughout; and double glazed windows.

SUSTAINABILITY FEATURES:

Minimum 7.5 star energy efficiency (higher can be achieved depending on orientation), 2.5kW solar power, heat-pump hot water service, 10,000 litre water storage, cross flow ventilation, quality insulation, thermal mass.

OTHER INCLUSIONS:

Daikin US7 – 7 Star split AC system, ceiling fans, Bosch oven and electric cooktop.

CONSTRUCTION COST:

Includes all standard inclusions as above, but does not include land price and landscaping.

All house designs can be customised to suit your block, budget and needs. The design team will work to achieve further cost reductions as the project progresses.

This information is subject to change without notice. Final prices will be provided at time of sale.

Learn how we can create your new beautifully sustainable home:

www.thesociableweaver.com.au | 0400 860 891 | info@thesociableweaver.com.au

